



2013 Organizational and Membership Report

Table of Contents

[Organizational Milestones](#)

[Partner journals](#)

[Submissions](#)

[Data packages and data files](#)

[File embargoes](#)

[Memberships](#)

[Data publishing charges](#)

[Payment plans](#)

[Sponsoring organizations](#)

[Financials](#)

[Usage](#)

[Data package views and data file downloads](#)

[Web traffic](#)

[Outreach](#)

[Blog posts](#)

[Twitter](#)

[Conferences and seminars](#)

Organizational Milestones

Dryad continued to make significant progress in the past year toward becoming a sustainably-funded, mission-driven nonprofit governed by a broad stakeholder community. Perhaps most importantly, the Dryad nonprofit introduced membership and submission fees in September 2013. The organization now has over 30 fee-paying member organizations, including societies, publishers, US federal research agencies, research networks and research institutions. As of the end of February 2014, submissions from 62 different journals were sponsored by 19 different organizations. A PCI-compliant online payment system was introduced for accepting Data Publication Charges, and shopping cart features were built into the submission system. To manage the critical operations associated with charging payment plans for new submissions, invoicing customers, etc. Dryad has enlisted the association management services of the Federation American Societies of Experimental Biology (FASEB).

We continued to refine the infrastructure for linking between articles and data. The web service for returning the corresponding Dryad data DOI when queried with an article DOI is now being used by Elsevier to provide a link to the data from ScienceDirect for 40 different Elsevier journals that have at least one data package in Dryad. Dryad is an international collaborator in the EU-funded ORCID-DataCite interoperability Network Project (odin-project.eu), which this past year introduced a tool enabling researchers to add research outputs with DataCite DOIs (such as Dryad data packages) to their ORCID profiles. We also introduced regularly updating of linkages between related records in PubMed, Genbank, and EuropePMC to data packages in Dryad. To further promote discoverability and accessibility, Dryad officially became a DataONE Tier 1 member node. Improvements to the curation interface have led to an increase in curation efficiency of greater than 25% in the past year.

Partner journals

Submission Integration is a free service that allows journal publishers to coordinate the submission of manuscripts with submission of data to Dryad used by over 50 partner journals. Dryad supports Submission Integration for any organization that publishes a scientific journal irrespective of whether the organization sponsors submissions through a payment plan or is a member of Dryad. The submission integration process works with many different online manuscript processing systems. It is lightweight, customizable to each journal's needs, and brings a number of benefits:

- Simplify the process of data submission for authors.
- Allow authors to deposit, to a single repository, gigabytes of data files in their original formats.
- Reduce the rate of noncompliance with journal data policy.
- Have the option of making data available for editorial or peer review, via secure access for editors and reviewers.
- Ensure bidirectional links between the article and the data and increased visibility for both.
- Ensure that the data is accessible once the article becomes available online.
- Give authors the option to embargo public access to data for a limited time after publication, if permitted by the journal's data policy.

Journals integrated in 2013 w/ workflow and sponsorship choices

Journal Title	Workflow choice	Sponsors submissions
Biology Letters	basic	Yes
Ecology and Evolution	basic	Yes
Ecology Letters	basic	No
Elementa: Science of the Anthropocene	basic	Yes
GMS Medizinische Informatik, Biometrie und Epidemiologie	review	Yes
Journal of Animal Ecology	basic	Yes
Journal of Applied Ecology	basic	Yes
Journal of Ecology	basic	Yes
Open Health Data	review	No
Methods in Ecology and Evolution	basic	Yes
Palaeontology	review	Yes
PLOS Genetics	review	No

Submissions

Data packages and data files

Dryad published 2,041 data packages in 2013, 53% more than in 2012. There were an average of 3.3 files per data package, an increase of only 8% from the prior year, while the average size per data package was 148 MB, an increase of nearly 3-fold.

These data packages were associated with articles from over 300 different journals. Dryad also continued to receive a small number of data packages associated with books and theses, notable examples being

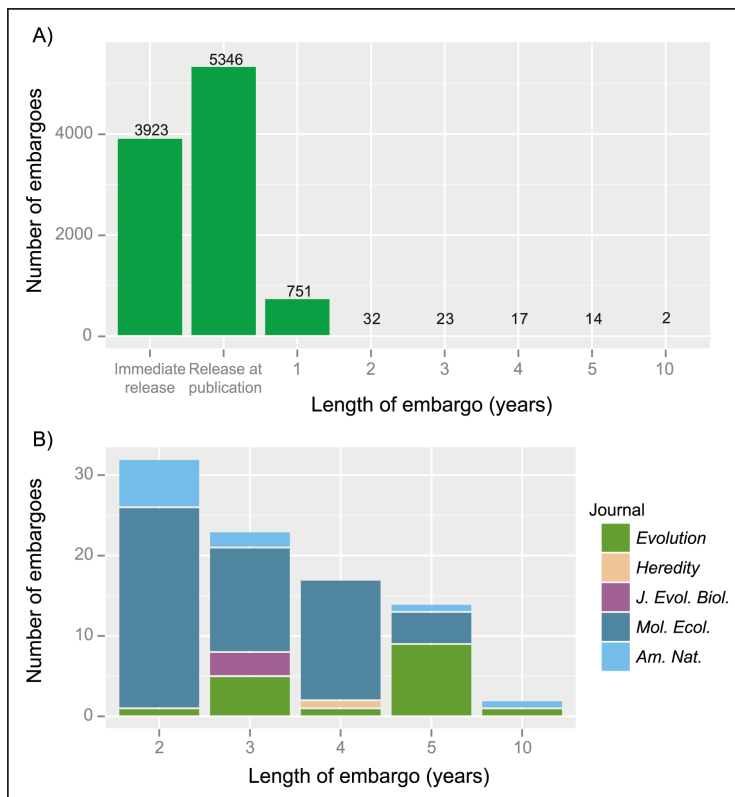
- Fairbairn DJ (2013) Data from: Odd couples: extraordinary differences between the sexes in the animal kingdom. Dryad Digital Repository. <http://doi.org/10.5061/dryad.n48cm>
- Grant P, Grant R (2013) Data from: 40 years of evolution. Darwin's finches on Daphne Major Island. Dryad Digital Repository <http://doi.org/10.5061/dryad.g6g3h>

Top 10 journals by number of data packages published in 2013

Journal	Data packages
Molecular Ecology	264
Evolution	168
PLoS ONE	138
Proceedings of the Royal Society B	121
Journal of Evolutionary Biology	118
The American Naturalist	110
Heredity	91
Biology Letters	73
Systematic Biology	58
Evolutionary Applications	48

File embargoes

Integrated journals may allow authors to embargo one or more datafiles within a data package from release for one year following the date of publication, or they may disallow this option. Editors may also direct Dryad to grant longer custom embargoes upon request. It is of interest to know how often embargoes are used when authors are given the choice, as a measure of the level of comfort researchers have with the idea of publishing data alongside an article. Reassuringly, we find that since 2009, more than 90% of datafiles are being released either immediately or at the time of article publication in those cases where the authors have freedom to choose. Less than 1% of datafiles were placed under specially requested embargoes of greater than one year, and those came from a limited number of journals (Vision T, Scherle R, Mannheimer, S (2013) Embargo selections of Dryad data authors. Figshare <http://dx.doi.org/10.6084/m9.figshare.805946>).



Embargo usage

(A) Embargo selections of Dryad data authors for the 10,108 files in Dryad (<http://datadryad.org/>) deposited from inception to September 20, 2013. Data include only datasets related to articles published in journals for which the authors had the option of selecting an embargo. (B) Longer-term embargoes (>1 year) by journal that granted them. Figures based on data from Vision *et al.* (see text) and published in Roche DG, Lanfear R, Binning SA, Haff TM, Schwanz LE, et al. (2014) Troubleshooting Public Data Archiving: Suggestions to Increase Participation. PLoS Biol 12(1): e1001779. doi:10.1371/journal.pbio.1001779

Memberships

Membership is open to any stakeholder organization, including but not limited to journals, scientific societies, publishers, research institutions, libraries, and funding organizations. Members have a say in the governance of the organization through nomination and election of its Board of Directors and voting on amendments to its Bylaws at the Annual Meeting; receive discounts on submission fees; participate in an active knowledge sharing network; and help advance the mission of the organization through their financial support. Membership runs from January to December; new members may join for the current year and/or the forthcoming year. Annual dues are \$1,000 for organizations with gross income below 10 million USD, and \$5,000 if above. Current members (not including renewals pending):

- [American Association for the Advancement of Science](#) *
- [American Society of Naturalists](#) *
- [The American Genetic Association](#) *
- [Botanical Society of America](#)
- [British Ecological Society](#) *
- [BMJ Publishing Group, Ltd.](#) *
- [BioMed Central](#) *
- [Cambridge University Press](#)
- [Ecology Letters](#) *
- [Ecological Society of America](#) *
- [Elementa: Science of the Anthropocene](#)
- [European Society for Evolutionary Biology](#) *
- [Evolutionary Applications](#) *
- [The Genetics Society](#) *
- [German National Library of Medicine](#)
- [HighWire](#)
- [Molecular Ecology](#) *
- [Molecular Ecology Resources](#) *
- [Molecular Phylogenetics and Evolution](#) *
- [Oxford University Press](#) *
- [The Paleontological Society](#) *
- [Pensoft Publishers](#) *
- [PLOS](#) *
- [The Royal Society](#)
- [Society for Molecular Biology and Evolution](#) *
- [Society for the Study of Evolution](#) *
- [Society of Systematic Biologists](#) *
- [United States Fish and Wildlife Service](#) *
- [Wiley](#) *

Charter Members (*) may elect to waive membership fees through 2015.

Data publishing charges

Payment plans

Organizations (including publishers, scientific societies, libraries, funders, and others) are encouraged to cover the costs of Data Publishing Charges (DPCs) on behalf of their community of researchers. For instance, a society or publisher may cover the costs for all the authors of its journals. To do this, Dryad offers a variety of payment plans that provide for volume discounts. If no payment plan is in place, authors must pay a DPC of \$80 when their data is accepted by Dryad.

1. Voucher Plan. Organizations purchase a block of vouchers for future submissions. This plan is open to any organization.

2. Deferred Payment. DPCs are invoiced for the number of packages submitted in the previous quarter. Participants must enter into a contract of at least one-year duration and may cap the number of submissions for which they are charged. This plan is open to publishers, publishing societies and independent journals.

3. Subscription Plan. A journal (or journals) with an active Subscription Plan may make an unlimited number of submissions for a fixed cost. This cost is calculated based on the total number of research articles published by the journal(s) in the prior year, or a reasonable estimate of anticipated volume for new titles. The minimum contract duration is two years, which can start at any time. Submission Integration is required for subscribing journals.

While base DPCs cover the entire cost of most submissions, additional charges will apply when data packages are in excess of the 10 GB size limit (\$15 will be charged for the first GB and \$10 for each additional GB or part thereof, payable by the submitter) and/or are associated with a data package from a non-integrated journal (\$10).

Summary of payment plans

Payment Plan	For members	For non-members	Minimum purchase
1. Voucher Plan	\$65 per data package	\$70 per data package	25 vouchers
2. Deferred Payment Plan	\$70 per data package	\$75 per data package	1 yr contract
3. Subscription Plan	annual fee based on \$25 per published research article	annual fee based on \$30 per published research article	2 yr contract

Sponsoring organizations

Twenty-four organizations sponsor DPCs on behalf of researchers and authors. The publishing organizations in this list collectively sponsor DPCs for 63 titles, while the research organizations sponsor DPCs on behalf of their affiliated researchers wherever they choose to publish. An up-to-date list of journals with sponsored DPCs is available at <http://datadryad.org/pages/integratedJournals>.

- American Genetic Association
- American Society of Naturalists
- American Society of Plant Biologists
- American Society of Plant Taxonomists
- BMJ Publishing Group
- Botanical Society of America
- British Ecological Society
- Canadian Healthy Oceans Network CHONe
- Ecological Society of America
- Elementa: Science of the Anthropocene
- eLife
- European Society for Evolutionary Biology
- German National Library of Medicine
- Nature Publishing Group
- Pensoft Publishers
- Society for the Study of Evolution
- Society of Systematic Biologists
- The Genetics Society
- The Palaeontological Association
- The Paleontological Society
- The Royal Society
- University of Rochester
- US Fish and Wildlife Service
- Wiley

Revenue, by payment plan

	Sept	Oct	Nov	Dec	Total
Subscription Plan	\$41,500	0	0	0	\$41,500
Voucher Plan	\$5,000	\$1,750	\$1,950	\$1,650	\$10,350
Deferred Payment Plan	\$1,470	\$4,135	\$2,310	\$2,740	\$10,655
Single vouchers	0	\$1,750	0	0	\$1,750
Individuals	\$1,350	\$5,025	\$2,790	\$3,040	\$12,205
Total	\$49,320	\$12,660	\$7,050	\$7,430	\$76,460

Data packages published, by payment plan

	Sept	Oct	Nov	Dec	Total
Subscriptions	56	83	60	71	270
Vouchers Accounts	0	6	5	7	18
Deferred	21	59	33	40	153
Single vouchers	0	0	5	2	7
Individuals	38	58	31	33	160
Total	115	206	134	153	608

Waivers are granted upon request for submissions originating from researchers based in countries classified by the World Bank as low-income or lower-middle-income economies. Waivers were granted for 8 data packages, two each from Nepal and Pakistan. one each from Afghanistan, Bolivia, India and Vietnam.

Financials

The full financial report for the second quarter of FY2013-2014, ending Dec 2013, is included as an Appendix.

In addition to the budget for the nonprofit, a four year \$2.18M award from the National Science Foundation to Duke University (Principal Investigator: Todd Vision) funds research and development in support of the repository. The budget for Year 2 of the award, from 1 March 2013 through 28 February 2014, was \$698,991. Subcontracts on this award included Dryad (to contract with FASEB for administrative management services), the curation team at the University of North Carolina at Chapel Hill School of Information and Library Sciences Metadata Research Center, and the primary production server at the North Carolina State University Digital Libraries.

Usage

Data package views and data file downloads

There were 265,484 data file downloads in 2013, 71,593 (27%) of which were for files that were published in 2013. In preparation of this report, a bug was discovered in the recording of the IP addresses. As a result, these numbers may be somewhat inflated by webcrawlers that we would ordinarily exclude from the counts; a correction is underway so that the statistics reported online will be accurate. Taking the numbers at face value, there were five data packages published in 2013 that received more than 1,000 total downloads, as shown below.

Top five most downloaded data packages published in 2013

Publication	Data package	Downloads
Bromham L, Cowman PF, Lanfear R (2013) Parasitic plants have increased rates of molecular evolution across all three genomes. BMC Evolutionary Biology 13: 126. doi:10.1186/1471-2148-13-126	Bromham L, Cowman PF, Lanfear R (2013) Data from: Parasitic plants have increased rates of molecular evolution across all three genomes. Dryad Digital Repository. doi:10.5061/dryad.fc74k	9,842
McTavish EJ, Decker JE, Schnabel RD, Taylor JF, Hillis DM (2013) New World cattle show ancestry from multiple independent domestication events. Proceedings of the National Academy of Sciences of the United States of America 110(15): E1398-E1406. doi:10.1073/pnas.1303367110	McTavish EJ, Decker JE, Schnabel RD, Taylor JF, Hillis DM (2013) Data from: New World cattle show ancestry from multiple independent domestication events. Dryad Digital Repository. doi:10.5061/dryad.42tr0	4,038
Lozier JD (2014) Revisiting comparisons of genetic diversity in stable and declining species: assessing genome-wide polymorphism in North American bumble bees using RAD sequencing. Molecular Ecology 23(4): 788–801. doi:10.1111/mec.12636	Lozier JD (2014) Data from: Revisiting comparisons of genetic diversity in stable and declining species: assessing genome-wide polymorphism in North American bumble bees using RAD sequencing. Dryad Digital Repository. doi:10.5061/dryad.12j05	3,340
Cowart DA, Huang C, Arnaud-Haond S, Carney SL, Fisher CR, Schaeffer SW (2013) Restriction to large-scale gene flow versus regional panmixia among cold seep Escarpia spp. (Polychaeta, Siboglinidae). Molecular Ecology 22(16): 4147–4162. doi:10.1111/mec.12379	Cowart DA, Huang C, Arnaud-Haond S, Carney SL, Fisher CR, Schaeffer SW (2013) Data from: Restriction to large-scale gene flow versus regional panmixia among cold seep Escarpia spp. (Polychaeta, Siboglinidae). Dryad Digital Repository. doi:10.5061/dryad.586b5	1,397
Rakhshani E, Starý P, Tomanović Ž (2012) Species of Adialytus Förster, 1862 (Hymenoptera, Braconidae, Aphidiinae) in Iran: taxonomic notes and tritrophic associations. ZooKeys 21: 81–95. doi:10.3897/zookeys.221.3541	Rakhshani E, Starý P, Tomanović Ž (2012) Data from: Species of Adialytus Förster, 1862 (Hymenoptera, Braconidae, Aphidiinae) in Iran: taxonomic notes and tritrophic associations. Dryad Digital Repository. doi:10.5061/dryad.fc57r	1,070

Web traffic

Downloads capture only part of user traffic, since users can search the metadata through our own APIs and third party indexers, and may search and browse the website without downloading data. Among the various statistics that are tracked for the main website at datadryad.org, here we report one of the most telling, the number of sessions, or visits from the same user with gaps of no more than 30 minutes between subsequent hits. The number of sessions increased 86%, from 81,675 in 2012 to 151,707 in 2013.

Sessions by language (top 5)

Language	Percentage
English	76.4%
Spanish	3.3%
French	3.1%
Chinese	2.6%
German	2.5%

Sessions by country (top 10)

Country	Percentage
United States	41.8%
United Kingdom	8.6%
Canada	5.7%
Germany	4.5%
France	3.2%
Australia	3.2%
China	2.5%
Spain	2.2%
Brazil	2.1%
Japan	2.1%

Outreach

Blog posts

There were 17 posts to <http://blog.datadryad.org> in 2013 (see list below), which attracted 10,848 pageviews, an increase of 32% over 2012. See the table below for a breakdown by country.

The most popular was a guest post from Tim Vines, Managing Editor of Molecular Ecology and Molecular Ecology Resources, entitled: “**How to decide what data should be archived at publication.**” Tim describes how the implementation of the very successful data archiving policy at his journals has been refined over time. This post continues to be great food for thought for journals considering or implementing data archiving policies. The next most popular, perhaps not surprisingly, were two separate posts written about the pending introduction of Data Publication Charges. Another popular post (with 642 views) was an interview with former DataONE postdoc and Impact Story co-founder Heather Piwowar.

All blog posts from 2013, in reverse chronological order

- **Data Citation Synthesis Group: Draft Declaration of Data Citation Principles.** A guest post from Simon Hodson. (26-Nov)
- **The who, what, when and why of Data Publishing Charges.** Announcement of the pending introduction of an important component of Dryad's sustainability plan. (30-Aug)
- **New open access journal Elementa integrates with Dryad.** Announcing a new integrated journal and sponsor, *Elementa: Science of the Anthropocene*. (14-Aug)
- **Ecology Letters integrates with Dryad.** Announcing a new integrated journal. (7- Aug)
- **We had a busy week in Oxford this past May.** A recap of the May 2013 Dryad Annual Meeting, which was held in conjunction with an ORCID Outreach Meeting, The Now and Future of Data Publishing conference (cosponsored by Jisc, BioSharing, DataONE, Dryad, STM and Wiley-Blackwell) and a Dryad-ORCID Symposium on Research Attribution. (31-Jul)
- **Elsevier and Dryad implement reciprocal linking.** The announcement that Elsevier's ScienceDirect platform will provide a banner linking out to Dryad when data are available in the repository, whether or not the reference to the data is in the article itself. (25-Jul)
- **Dryad's Annual Membership Meeting, and much more, in Oxford this month.** An invitation to the suite of Dryad-related events at Oxford in May, 2013. (6-May)
- **Odd couples in the animal kingdom, but not in a data repository.** Celebrating Dryad's first data package associated with a book, *Odd Couples: Extraordinary Differences Between the Sexes in the Animal Kingdom*, by Daphne Fairbairn, from Princeton University Press. (30-Apr)
- **Submission fees to be introduced in September 2013.** Announcing the introduction of DPCs starting September. (29-Apr)
- **A shiny new look and lots more info.** Announcement of our revamped website. (16-Apr)

- **New journals integrate data submission with Dryad.** Announcing multiple new partner journals from the British Ecological Society, GMS German Medical Science, eLife, and the Journal of Open Public Health Data. (13-Apr)
- **An interview with Heather Piwowar: on data archiving, open notebook science, and discovering your impact flavor.** Interview with a former DataONE postdoc and cofounder of Impact Story. (4-Apr)
- **Biology Letters integrates with Dryad.** Announcement of a new partner journal. (30-Mar)
- **Linking from PubMed and GenBank to data in Dryad PubMed and GenBank.** Announcement of the introduction of links between the widely used NCBI databases and associated data in Dryad. (6-Mar)
- **Hope and change for research data in the US.** An announcement of an important US White House directive regarding open research data. (24-Feb)
- **Dryad Membership Meeting & data publishing symposium.** A "mark your calendar" announcement for the events at Oxford in May 2013. (11-Feb)
- **How to decide what data should be archived at publication.** A guest post from Tim Vines describing the evolving approach to implementing data archiving policy at Molecular Ecology. (2-Feb)

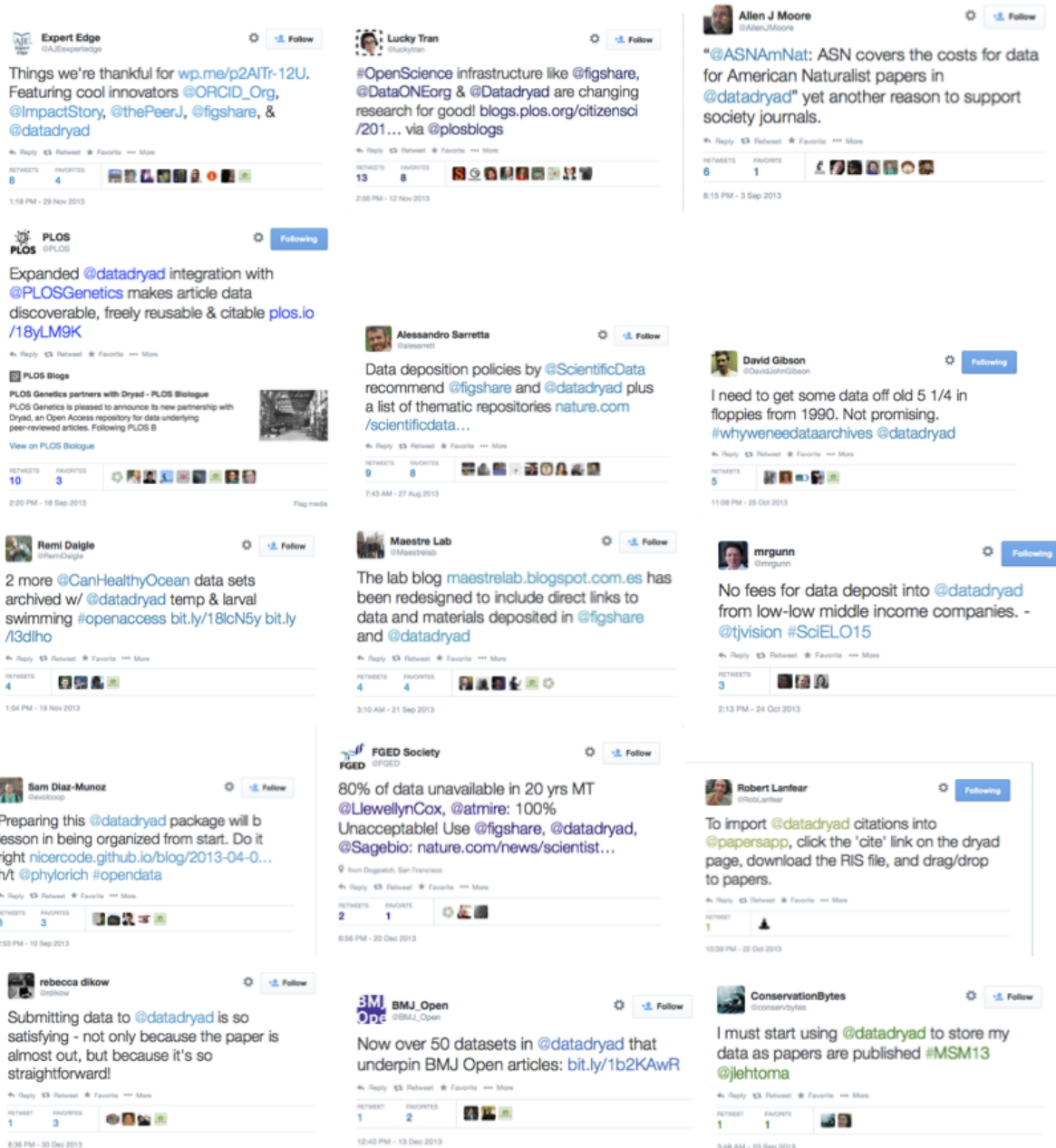
Blog readership, by country (top 10)

Country	Number of visits
USA	5010
UK	1643
Canada	616
Germany	383
Australia	300
France	298
India	265
Netherlands	232
Japan	159
Spain	154

Twitter

The main @datadryad twitter account had 6,079 followers by the end of 2013, compared to 2,389 at the end of 2012. We also continue to post all new data packages at a less widely followed account: @datadryadnew.

A sample of popular tweets in which Dryad is mentioned



Conferences and seminars

Dryad had a presence through either a presentation or a conference table at the following events in 2013.

- CurateGear Symposium. Chapel Hill, NC, 9 January
- Research Data Alliance Launch Goteburg, Sweden, 18-20 March
- Now and Future of Data Publications / Dryad-ORCID outreach meetings, Oxford, UK, 21-24 May
- IASSIST 39th Annual Conference Cologne, Germany, 28-31 May
- OpenAire workshop at ELAG2013, Ghent, Belgium, 28 May
- DSpace Users Meeting, CERN Workshop on Innovations in Scholarly Communication (OAI8), Geneva, Switzerland, 18 June
- DataONE User Group Meeting and ESIP2013, Chapel Hill, NC, 7-8 July
- Open Repositories 2013 Prince Edward Island, Canada, 8-12 July
- Joint Conference on Digital Libraries (JCDL 2013) Indianapolis IN, 22-26 July 22-26
- Enhancing Data Discovery and Usability for Inquiry in Biology Education, Ann Arbor, MI, 25-26 July
- Cochrane Colloquium, Toronto, Canada, 14-15 August
- iPRES 2013, Lisbon, Portugal, 2-5 September
- Dublin Core 2013, Lisbon, Portugal, 2-6 September
- Research Data Alliance and DataCite Summer Meetings, Washington DC, 16-20 September
- Smarter Agriculture: Dialogue on Critical Data for Agriculture, Potomac, MD 10-11 October
- Presentation to INRA, ERSTEA and URFIST, organized by CODATA, Paris, 21 November
- ODIN Codefest and Outreach Meeting, CERN, Geneva, Switzerland, 15-18 October
- DataONE All Hands Meeting, Albuquerque, NM, 22-24 October
- Scielo15, São Paulo, Brazil, 22-25 October (by webcast)
- HighWire publisher's meeting, Washington DC, 20-21 November



Financial Report FY2013-14 Second Quarter Plus Cumulative Activity

This financial report covers the period of July 1, 2013 – December 31, 2013. The bank account has been reconciled monthly and the all liabilities and expenses are supported by loan documents, invoices and payroll reports. The figures have been verified by accountants at the Federation of American Societies for Experimental Biology (FASEB).

Laura Wendell

Project Manager
Executive Director

Dryad

Statement of Financial Position As of December 31, 2014*

ASSETS

Current Assets

Cash - Operating	\$52,769.51
Undeposited Funds	85.89
Accounts Receivable	<u>16,496.77¹</u>
Total Current Assets	<u>69,352.17</u>

TOTAL ASSETS	<u>\$69,352.17</u>
--------------	--------------------

LIABILITIES AND NET ASSETS

Current Liabilities

Accounts Payable		5,956.08
Deferred Income		13,000.00 ²
Payroll Liabilities		
Payroll Taxes Withheld	102.00	
NC Income Tax	75.00	
NC Unemployment Tax	<u>24.00</u>	<u>201.00</u>
Total Current Liabilities		<u>9,157.08</u>
Net Assets		<u>50,195.09</u>

TOTAL LIABILITIES AND NET ASSETS	<u>69,352.17</u>
----------------------------------	------------------

* For internal managerial purposes only; not to be relied on by third parties.

Dryad

Statement of Activities October 1, 2013 – December 31, 2013*

Revenues:

Contributions		\$0
Membership Dues		0
Subaward 14-NSF-1045		19,736.77
Submission Fees		
Individual Payments	10,669.78	
Payment Plans	<u>8,570.00</u>	<u>19,239.78</u>
Total Revenues		<u><u>38,976.55</u></u>

Expenses:

Bank Charges		0
Currency Conversion Expense		77.31
Wire Fees		86.00
FASEB - Subcontract		15,736.77
Insurance		550.00
Health Insurance		1,092.00
Legal & Professional Fees		1,111.53
Office Expenses		245.91
Paypal Transaction Fees		656.27
Payroll Expenses		
Taxes	177.00	
Wages	<u>2,000.01</u>	
Total Payroll Expenses		<u>2,177.01</u>
Shipping and Delivery Expense		9.20
Total Expenses		<u><u>21,742.00</u></u>
Change in Net Assets		17,234.55
Net Assets at Beginning of Quarter		<u>32,960.54</u>
Net Assets at December 31		<u><u>\$50,195.09</u></u>

*For internal managerial purposes only; not to be relied on by third parties.

Dryad

Statement of Activities

July 1, 2013 – December 31, 2013*

Revenues:

Contributions		\$ 1,000.00
Membership Dues		5,000.00
Subaward 14-NSF-1045		19,736.77
Submission Fees		
Individual Payments	11,839.78	
Payment Plans	<u>55,070.00</u>	<u>66,909.78</u>
Total Revenues		<u><u>92,646.55</u></u>

Expenses:

Bank Charges		28.00
Currency Conversion Expense		77.31
Wire Fees		98.00
FASEB - Subcontract		19,736.77
Insurance		1,100.00
Health Insurance		1,092.00
Legal & Professional Fees		7,766.28
Office Expenses		394.07
Paypal Transaction Fees		754.60
Payroll Expenses		
Taxes	354.00	
Wages	<u>4,000.02</u>	
Total Payroll Expenses		<u>4,354.02</u>
Shipping and Delivery Expense		17.95
Total Expenses		<u><u>35,419.00</u></u>
Change in Net Assets		57,227.55
Net Assets at Beginning of Year		<u>(7,032.46)</u>
Net Assets at December 31		<u><u>\$50,195.09</u></u>

*For internal managerial purposes only; not to be relied on by third parties.

Notes

1. A total of \$86,806.77 was invoiced for Membership Dues, Subawards and Submission Fees. Collections were \$70,310, leaving a receivable as shown below:

Submission fees	\$	4,600.00
Subaward		<u>11,896.77</u>
	\$	<u>16,496.77</u>

2. The dues paid for periods beyond 2013, totaling \$13,000, are deferred and included in the balance sheet liability section. The Membership dues income recognized for the six months ending 12.31.13 is \$5,000.