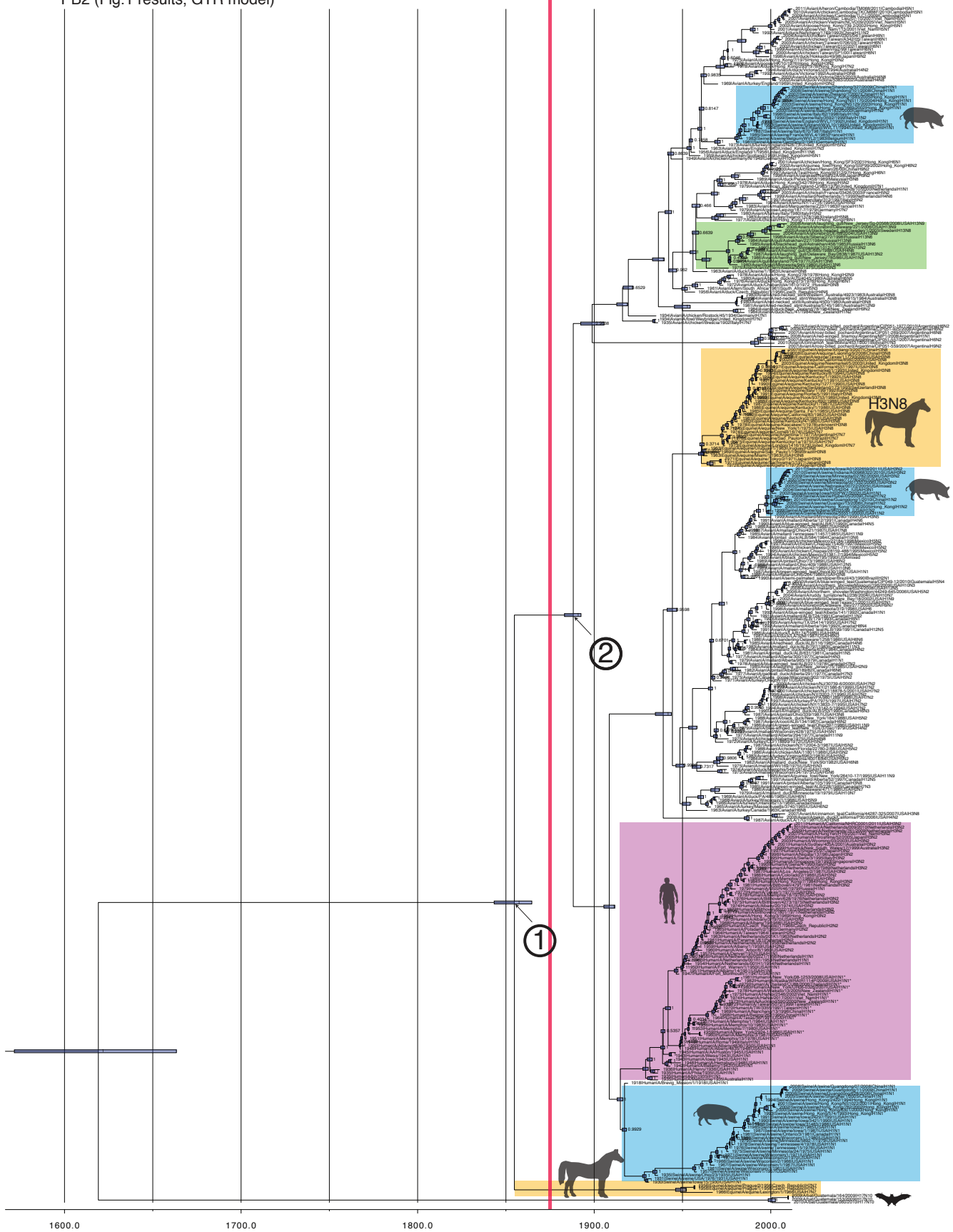


PB2 (Fig.1 results, GTR model)

1872



eastern av.

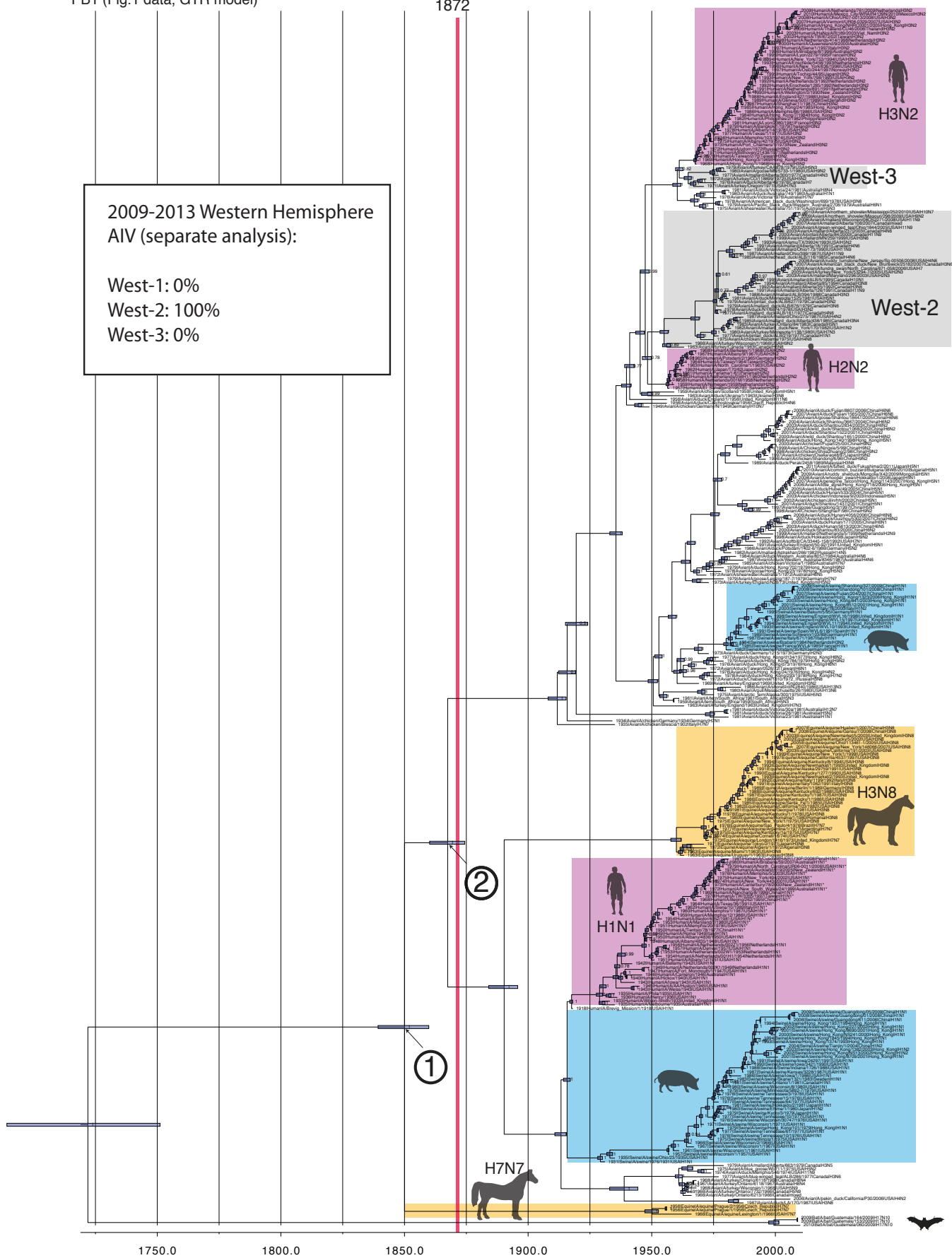
western avian

PB1 (Fig.1 data, GTR model)

1872

2009-2013 Western Hemisphere  
AIV (separate analysis):

West-1: 0%  
West-2: 100%  
West-3: 0%



eastern av.

western avian (West-1)

PA (Fig.1 results, GTR model)

2009-2013 Western Hemisphere  
AIV (separate analysis):

- West-1: 0.1%
- West-2: 39.9%
- West-3: 60.0%

1872

West-3

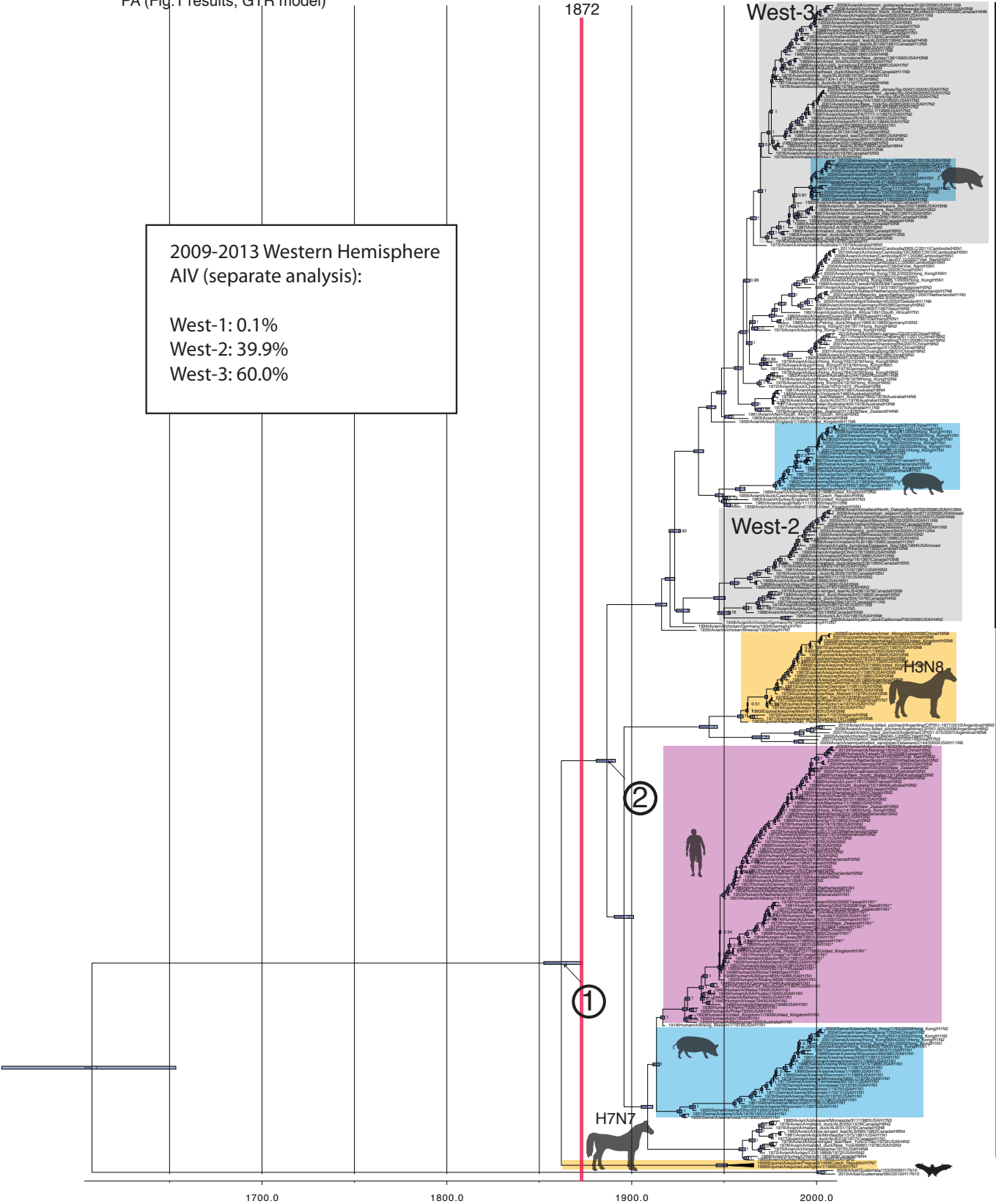
West-2

H3N8

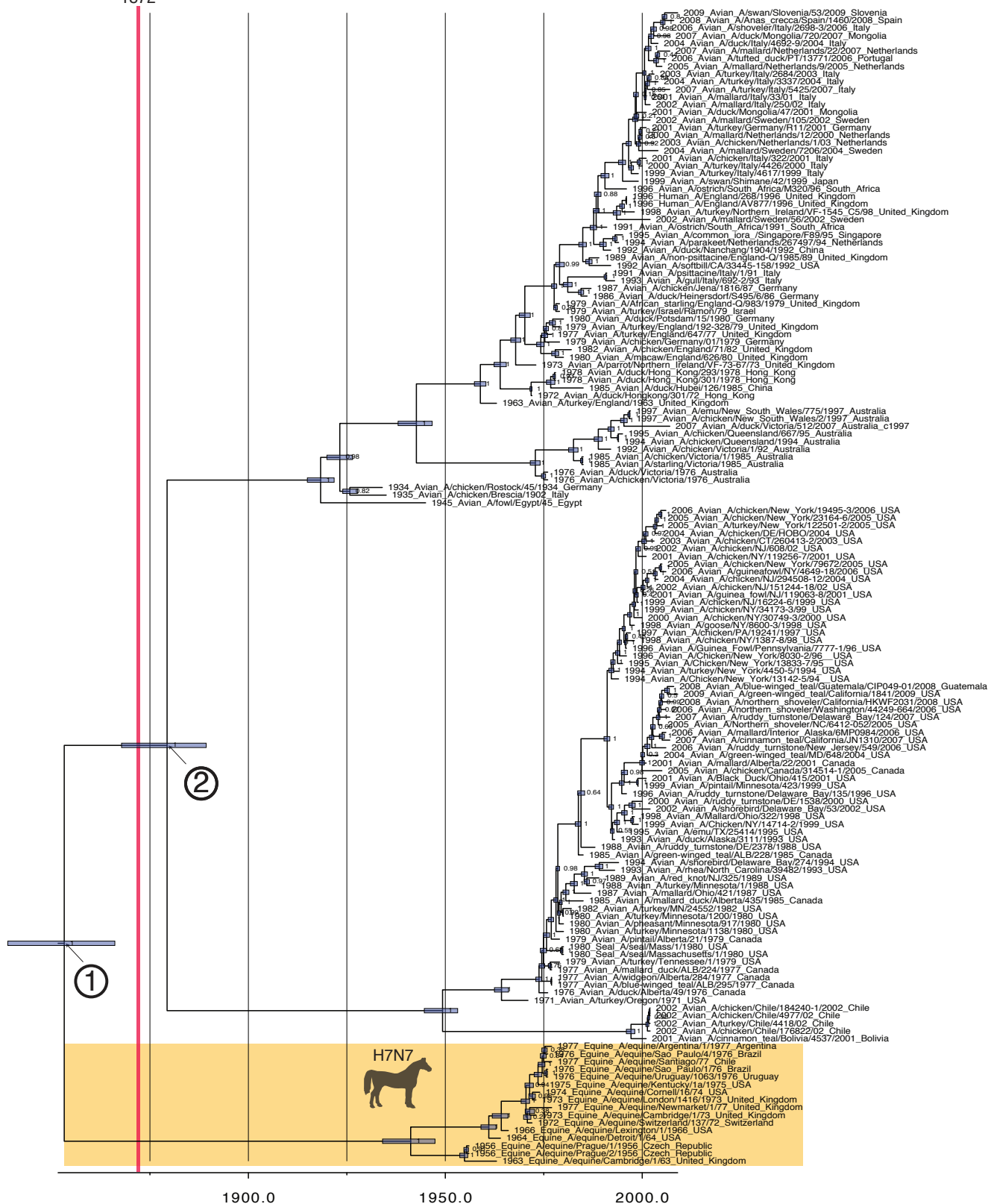
H7N7

eastern av.

western avian (West-1)



1872



eastern avian

western avian

NP (Fig.1 results, GTR model)

2009-2013 Western Hemisphere  
AIV (separate analysis):

West-1: 1.4%  
West-2: 97.4%

1872

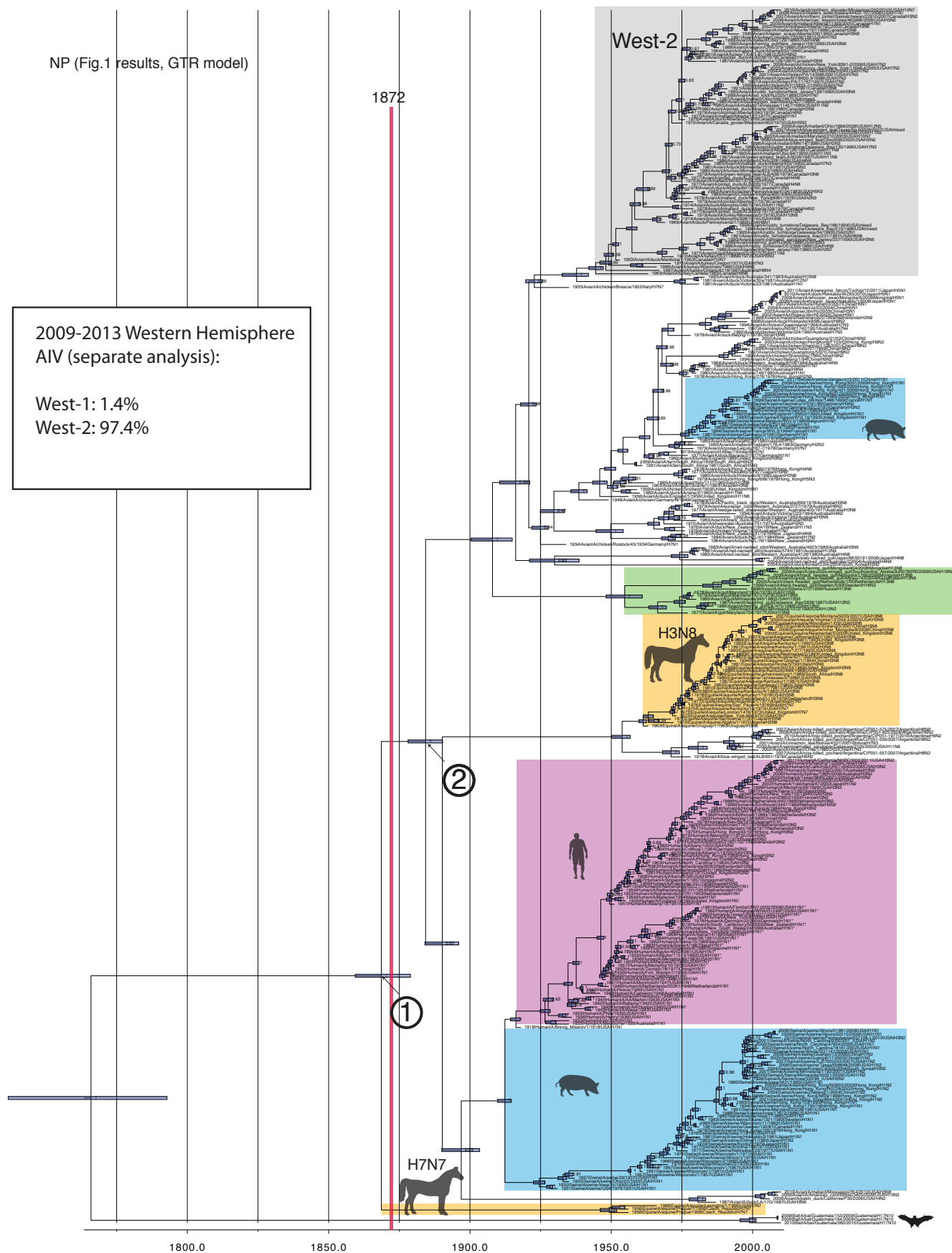
West-2

H3N8

H7N7

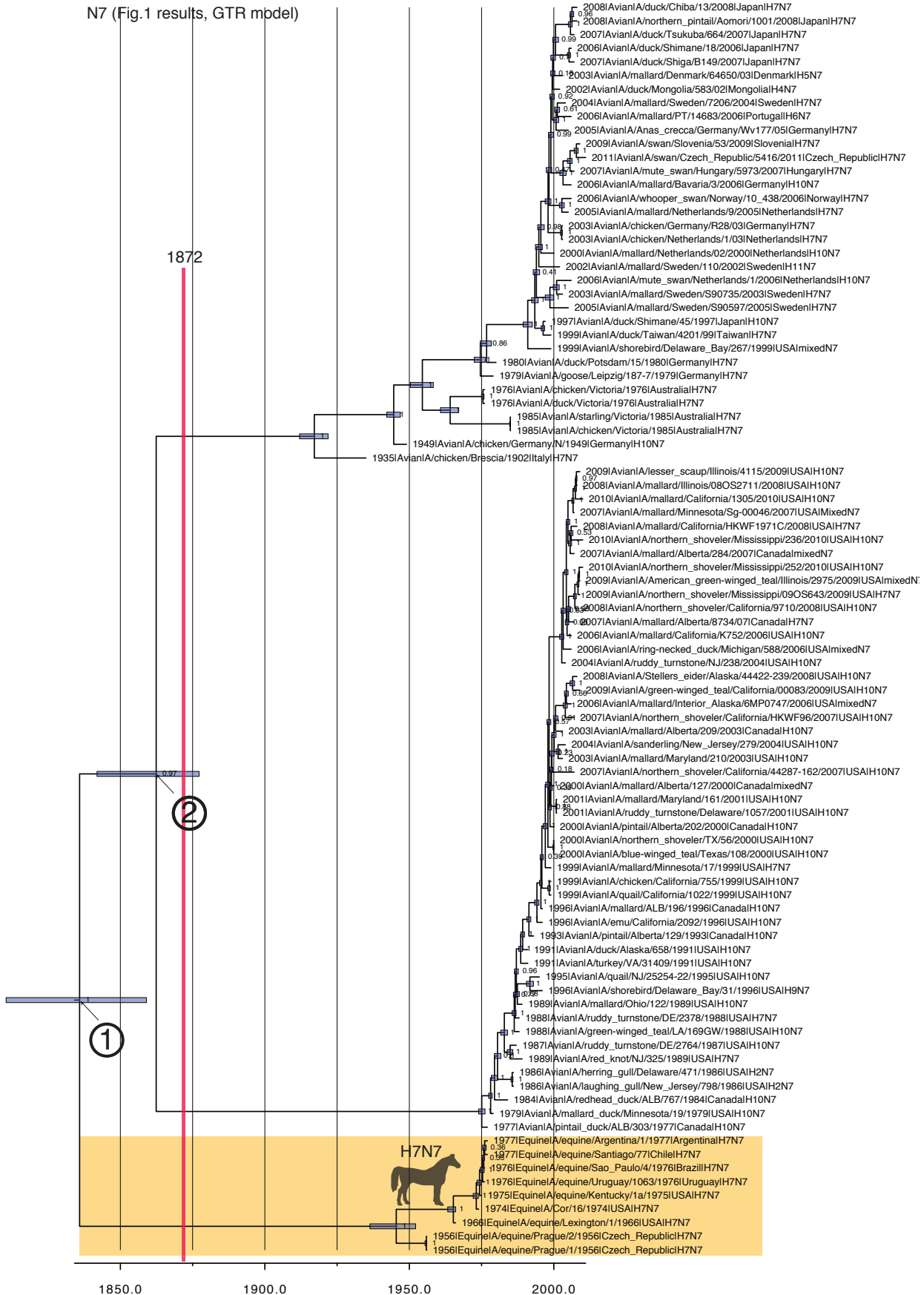
eastern av.

western avian (West-1)

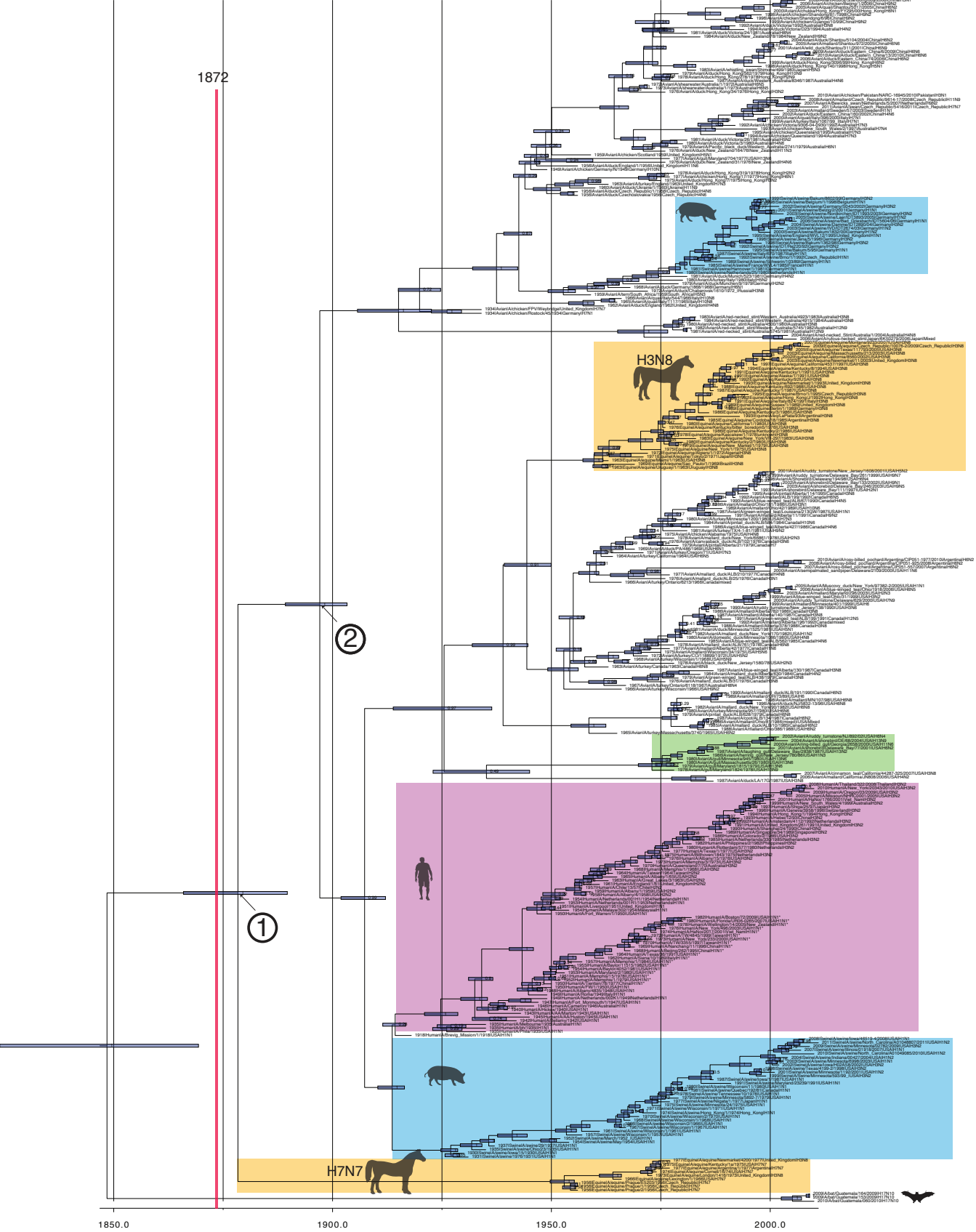




N7 (Fig.1 results, GTR model)



M1/2 (Fig.1 results, GTR model)



eastern av.

western avian

NS1/2 (Fig.1 results, GTR model)

2009-2013 Western Hemisphere  
AIV (separate analysis):

NS A West-1: 1.1%  
NS A West-2: 98.9%

1872

West-2

H3N8

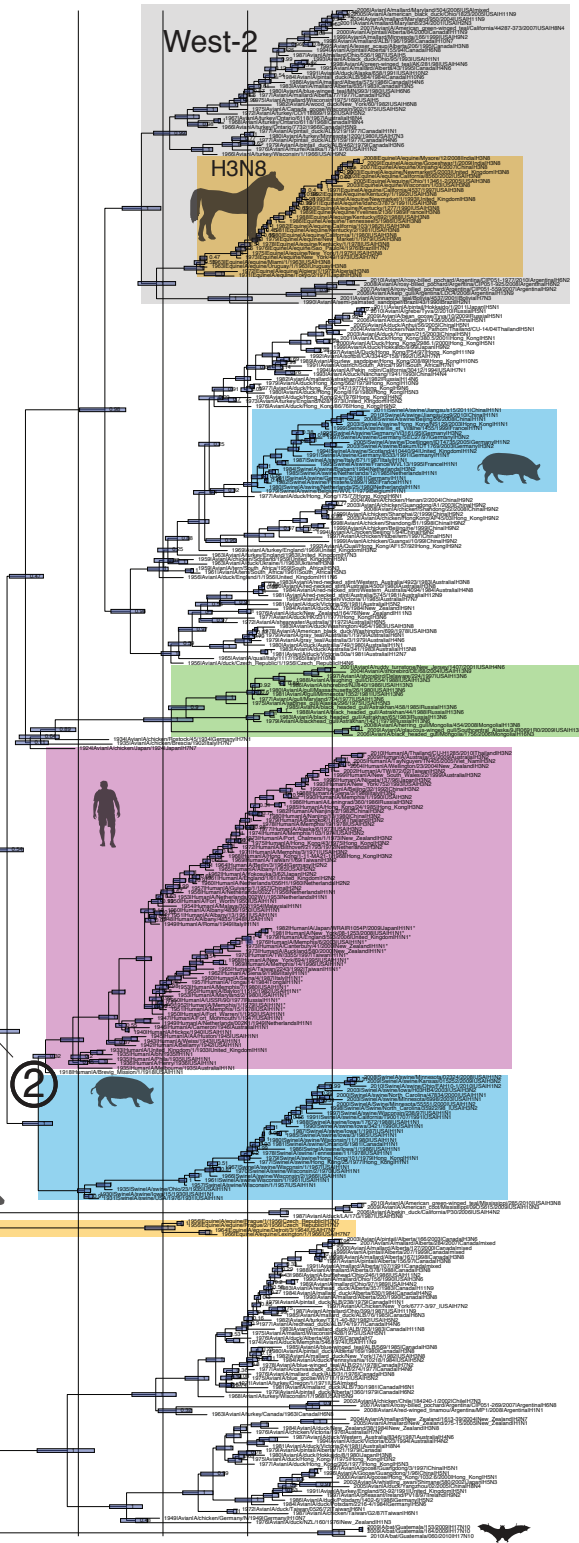


eastern avian

*NS lineage A*

western avian (West-1)

*NS lineage B*



①



H7N7

②



1750.0

1800.0

1850.0

1900.0

1950.0

2000.0